



## Increase the **findability** of your content

LEXAURUS BANK | LEXAURUS EDITOR

Organisations looking for efficiency and the best possible performance need to control, access and exploit information assets to the full. People working in an organisation, or interacting with it, want to be able to find and utilise valuable information and content in a fast, reliable and efficient way. Enterprise repositories need to interoperate in order to deliver the right content, in the relevant context, to support an organisation's objectives.

Lexaurus® terminology management solutions enable the development and control of structured vocabularies to help combine information resources; delivering enterprise and web content search that is fast and precise. Lexaurus is widely used by taxonomists, knowledge managers, information professionals and subject matter experts to standardise classification terms for organisational information, content, records and libraries.

**LEXAURUS**  
makes words make sense





***Findability*** is the new search, enabling personnel and consumers to access the right information at the right time.

The Vocabulary Management Group's Lexaurus product suite introduces a powerful yet cost-effective approach to handling overwhelming quantities of business critical information.

Structured vocabularies define classification terms to improve the discovery and re-use of content within and across organisations. Business processes are supported through collaborative information sharing and well-informed decision making, thereby enriching customer-centric, online content interactions.

Based on an open, standards-based architecture that supports industry leading formats, Lexaurus is simple to use and scalable to deploy.

### Controlling Vocabularies

Terminology standardisation is central to every effective information management strategy. Controlled vocabularies consolidate standardised terms into a structure that reflects existing business activities, processes and resources. Defined terms are used to give precise categorisation to individual documents, records and other unstructured content, thereby avoiding ambiguity and supporting corporate understanding. The accurate classification of information assets against structured data can substantially enhance the findability and usability of their content, whether by staff members, external content consumers or systems to which they are linked.

### Managing Metadata

Controlled vocabularies underpin effective metadata management. Content discovery is achieved by mapping relationships between differing terms and content held in multiple repositories, and then connecting topics, activities and resources relevant to the subject of the search. When metadata is used consistently across diverse systems in multi-department or global organisations, and between related business entities, the constraints of separate data silos are overcome. Systems, documents and knowledge are inter-linked with structured search data, facilitating intelligent system interoperability through cohesive semantic interpretation.

***"Lexaurus Bank has been of great help in enabling our partner museums to directly upload and populate the 'Exploring 20th Century London' website with consistently classified content."***

ALEX BROMLEY, DOCUMENTATION OFFICER, MUSEUM OF LONDON



***"Our [online content delivery] project had very specific requirements and needed to meet some very tight deadlines, so VocMan's flexibility to adapt and implement their solution quickly was of great benefit."***

KRISTIN COOPER, CONTENT MANAGER FOR NATIONAL STRATEGIES

### What are controlled vocabularies?

Vocabularies are sets of terms. Terms are words or phrases that explicitly define concepts relating to their own meaning and also the relationship(s) they hold with other terms. A controlled vocabulary is a structure of terms, varying in complexity from simple lists and hierarchical taxonomies to more extensive networks of relationships and associations. Hierarchical taxonomies define terms by their relationship(s) with broader and narrower terms, while poly-hierarchical taxonomies use multiple 'tree' structures. Thesauri support relationship types and descriptive metadata about the term itself, while ontologies concern relationships and descriptions that are more extensive and less constrained in their format.

Irrespective of their structure, most business vocabularies will inform users of:

- Preferred or mandatory terms to be used for indexing and metadata.
- Structural and classification information for navigation.

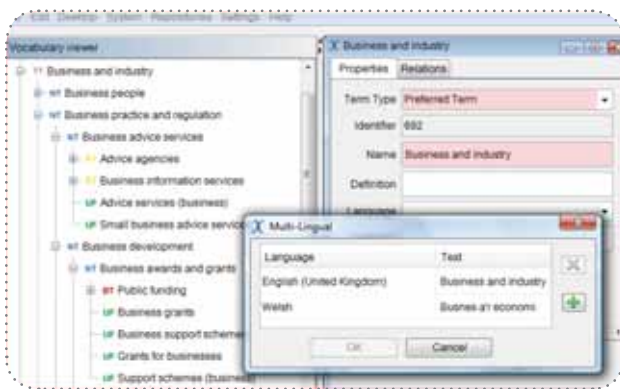
## Lexaurus Terminology Management Solutions

Lexaurus is an integrated product suite that supports the creation and modification of vocabularies, and their subsequent management, dissemination and on-going provision to users and systems. Lexaurus separates vocabulary management into two component solutions: Lexaurus Editor (for editing) and Lexaurus Bank (for publication). This approach ensures clearly defined workflows with more controllable revision control, and enhances overall scalability and performance.



### Lexaurus Editor: creating vocabularies

Terminology creation is no longer a task for taxonomists and information professionals alone; the active participation of subject matter experts, linguists and CMS implementers is often required as well. Lexaurus Editor fulfils this role, combining extensive vocabulary development capabilities with a simple, intuitive user interface.



#### Lexaurus Editor: key features

- **Offline editor** for developing all forms of vocabulary structure, including poly-hierarchical taxonomies, faceted thesauri and ontologies.
- **Customisable, vocabulary-specific schemas** for extensive term definition with full multilingual support.
- **Highlighted display of relationships and associations**, including Broader/Narrower terms (parent/child), Use/Use For for preferred and non-preferred terms e.g. addressing synonyms and homographs, Related Terms and Linguistic Equivalent.
- **Vocabulary import/export** using industry standard data exchange formats such as Zthes and SKOS. Multiple vocabularies can be loaded simultaneously for editing.
- **Drag and drop** for quick, simple modification of hierarchies, re-use of different terminology sets and mapping between vocabularies.
- **Dedicated editing environment** for isolating and exploring hierarchical structures and updating term definitions/relationships.
- **Nested export** format facilitates easy reporting and customisation of exports for viewing.
- **Cross platform/database**; shipped with embedded database.



### Lexaurus Bank: vocabulary server

Lexaurus Bank is a powerful vocabulary server that provides an online repository for managing and publishing controlled vocabularies. Available as an on-site solution or hosted service, Lexaurus Bank brings class-leading performance and management facilities in a scalable web server application.

Lexaurus Bank enables users to identify and view definitive terms, ascertain their relationships, context, previous iterations and unique web address identifier, and download these individual terms or complete vocabularies. All historical information relating to term and vocabulary development is retained. This provides a centralised, trusted data source for organisation or sector-wide approved terminologies, and Web Service synchronisation of metadata models, schemas and business semantics between enterprise applications and information systems.



#### Lexaurus Bank: key features

- **Web-based repository** for multiple published vocabularies to be consolidated and disseminated, organisation or sector-wide.
- **Customisable web interface** provides advanced search and browse options.
- **Collaborative on-line creation, editing and mapping** of terminologies across distributed environments.
- **Import and export** using industry standard formats.
- **Extensible descriptive schemas**, facilitating extended thesaural/ontological descriptions of classification data, with full support for multilingual term definitions.
- **Standards-based RESTful interface** integrates with other information-centric solutions, enabling dynamic terminology updates.
- **Rapid synchronisation of classification changes** across all consumers of vocabulary data (e.g. end user navigation, system database indexes, search queries etc.) including differences (deltas) between versions.
- **Terminology uniqueness** ensured by persistent URIs for all repository content.
- **Full version management** and audit logging of modifications to definitions and vocabularies.

## Evolution of Lexaurus vocabulary management

The Lexaurus suite has evolved from a solution initially developed for Becta (British Educational Communications and Technology Agency) and subsequently the DCSF (Department for Children, Schools and Families). This solution became the Vocabulary Management Service for the publication of controlled vocabularies within the UK Education sector, managing over 70 curriculum vocabularies. Lexaurus Bank is also now a central component of the European Schoolnet initiative to deliver a multi-lingual Vocabulary Bank supporting the entire European schools sector.

## Vocabulary Standards

Lexaurus supports industry standard vocabulary representation and exchange formats, ensuring wide-scale compatibility with information, library, content and records management systems. These include:

**Zthes:** a model for representing thesauri and a specification for expressing them in XML, based on the international search/retrieval protocol and standard, Z39.50.

**SKOS:** Simple Knowledge Organisation System, developed by W3C, is an established standard reference model and data interchange format. SKOS expresses the basic structure and content of concept schemes such as thesauri, classification schemes and taxonomies.

**IMS VDEX:** a mark-up language for controlled vocabularies commonly used in education, allowing the exchange and expression of machine-readable lists of human language terms that can be easily interchanged between systems.

“The availability of curriculum terms held in the Becta VMS, and the support of VocMan, were important factors in helping LSIS develop its vocabularies for the Excellence Gateway portal.”

BARRY KRUGER, DIRECTOR, KNOWLEDGE AND INTELLIGENCE, LEARNING & SKILLS IMPROVEMENT SERVICE



## About Vocabulary Management Group

The Vocabulary Management Group Ltd. was formed in 2005 by two UK-based partner companies, Schemeta and Knowledge Integration, bringing together more than 50 person-years of experience in knowledge organisation. Today, Vocabulary Management Group is a leading international software and consultancy company for the creation, management and dissemination of digital vocabularies and similar structured information. The company has an established and growing customer base in both the public and private sector. We serve clients in education, cultural, government and commercial organisations in the UK and Europe, and support systems ranging from hundreds to millions of terms.

